

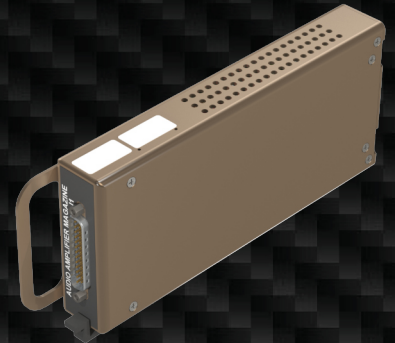
ELEVATE

AUDIO AMPLIFIER SOLUTIONS

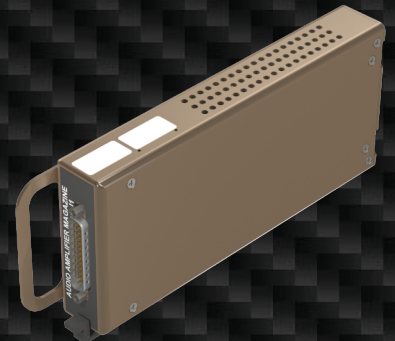
AVIATION'S FIRST!

Customized Modular Audio Amplifier

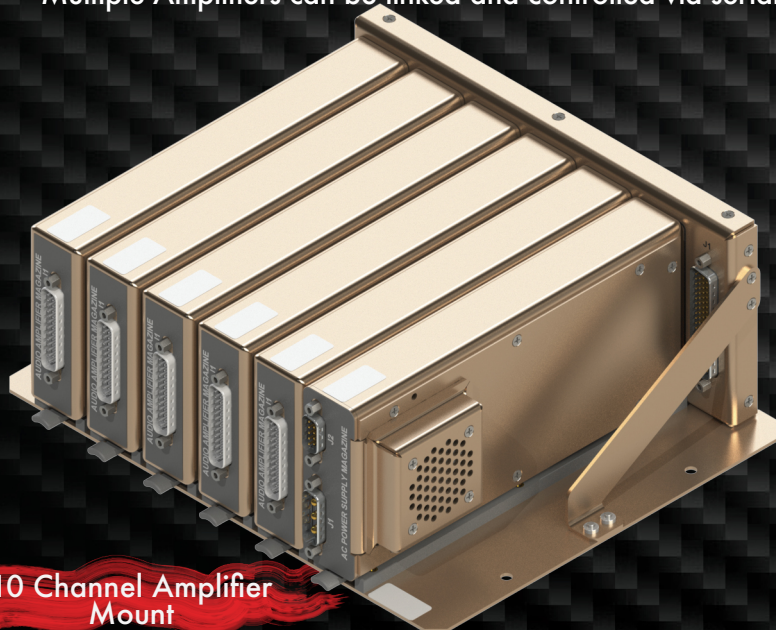
- Full Matrix Class D Amplifier with DSP control that manages 10 inputs and 10 outputs per unit.
- 9 Band EQ per channel
- Modular Power Supply for AC and DC aircraft.
- Each module has 2 Channels of audio @ 85w per channel (or 4 speakers in parallel at 42.5 watts per)
- Each module can be configured for a single subwoofer @ 200 watts in PBTl mode.
- PA capabilities built in, but unit is not scheduled for TSO approval until end of Q1, 2024.
- Multiple Amplifiers can be linked and controlled via serial bus.



Audio Amplifier Magazine
2 channels at 85w each
209-0001-01



Audio Amplifier
Subwoofer Magazine
1 channel at 200w
209-0001-02



10 Channel Amplifier
Mount
201-0011-01



AC to DC and DC to DC
Power Supply Magazine
209-0007-01, 209-0009-01

ELEVATE

AUDIO SPEAKER SOLUTIONS

Modular Speakers and Subwoofers

- CMS ELEVATE speakers come in multiple sizes to best fit the existing removed speaker location.
- Our modular adapter brackets allow the existing aircraft mounts to be re-used allowing for a quick and easy installation
- Our mid-range speaker, equipped with a 4" driver and air motion tweeter, delivers a perfect blend of punchy mid-range and crisp highs, ensuring a rich and detailed audio experience.
- Our 8" subwoofers are industry game changers, redefining audio standards with their deep bass, advanced technology, and versatile applications. Their impact has not only elevated sound quality but also influenced industry innovation, setting a new benchmark for subwoofer excellence.
- All of the ELEVATE components have undergone DO-160 testing and have passed flammability requirements.



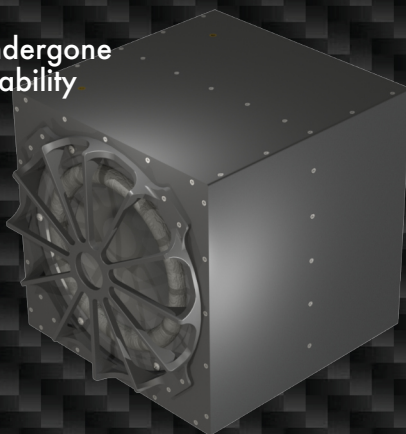
4 Channel Audio Line Amplifier
209-0005-01



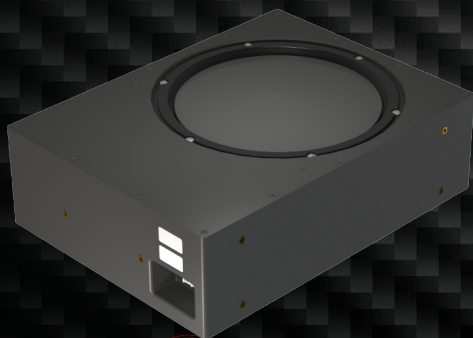
Mid Range Speaker
209-0002-01



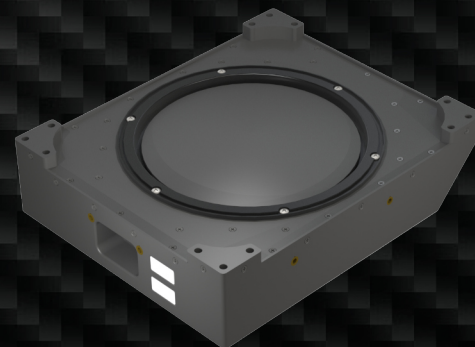
Bi-Directional Speaker
209-0006-01



Subwoofer 8in
209-0003-01



Subwoofer 8in
Low Profile
209-0009-01



Subwoofer 8in
Low Profile G550
209-0010-001